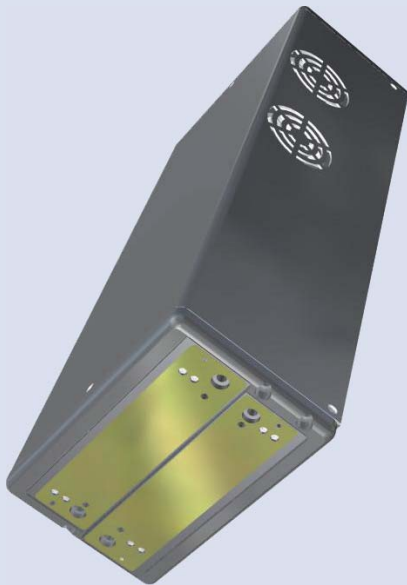




The smallest and most cost effective

The GT-Jet SG 256/512 is based on DOD-technology from Spectra. The GT-Jet SG 256/512 is a very compact fully integrated head. No base unit is required as all the electronics is integrated in the head itself. It is ready to print in 5 minutes and can be operated with UV-curable and solvent-

based inks. The GT-Jet SG 256/512 can be used to print on a variety of different products like paper, coated paper, foils, plastic cards etc. The user interface is easy to handle, offers a good overview and with its windows technology it is truly intuitive. The layout is fully WYSIWYG.



High Quality

- Up to 400 DPI in X and Y direction
- The resolution is flexible and can be selected by job on the SG 256 > High resolution, small printing width, lower resolution big printing width. 182 DPI in running direction for the SG 512
- Supports different inks to suit your application
- Spot colors are available and are easily switchable
- Speeds up to 2 m/sec at a resolution in Y direction of 256 DPI

Easy to handle

- Start up in less than 2 minutes
- Intuitive WYSIWYG layout
- Easy set up through the full graphic user interface of the whole inkjet system
- Variable and fixed text as well as all common barcodes can be setup easily
- Fixed and variable bitmaps in nearly any format can be processed

Low costs

- Running and investment costs are 2-3 times lower than on binary continuous inkjets
- No make up fluids required
- Spare heads are available for reasonable prices
- Refurbish program for spare heads is available

Applications

- Addressing and personalization for mailing, magazines, newspaper etc.
- Numbering applications for tickets, lotteries etc.
- Any application where variable data needs to be applied onto nearly any media in a good quality

Technical Details

Characteristics

- Compact, fully integrated head, no base unit required
- The jetting assembly can be replaced in the field
- Spectra technology, based on Nova and Galaxy printing modules
- Various drop size to suit your application are available

Technical data

- Dimensions ink supply (HxWxD) 180x175x260
- Dimensions bottle holder (HxWxD) 230x125x120
- Length print head umbilical 5 m
- Dimensions print head (HxWxD) 275x112x70 mm
- Vertical resolution SG 256 91-400 DPI
- Vertical resolution SG 512 182 DPI
- Horizontal resolution 91-400 DPI
- Ink supply 1 Liter ink bottles easy to change
- Ink types Solvent, UV-Curable
- Printing head type Spectra Nova or Galaxy
- Ink drop size 30pL or 80pL
- Maximum printing frequency 20 kHz
- Print width per head SG 256 up to 71.5 mm (2.8") at 91 DPI
- Print width per head SG 512 71.5 mm (2.8") at 182 DPI
- Print length Possible without a gap

- Linear speed at horizontal resolution

DPI	m/S	m/min	fpm
91	5.1	335	1099
200	2.5	152	500
300	1.7	102	333
400	1.3	76	250

Distribution:



Graph-Tech AG
 Aeschwahrstr. 15
 4665 Oftringen
 Switzerland

Phone +41 62 746 0650
 Fax +41 62 746 0655
 Website www.graph-tech.ch